
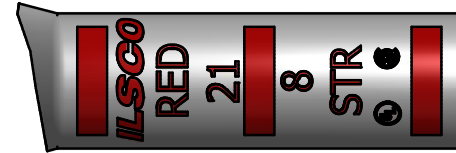
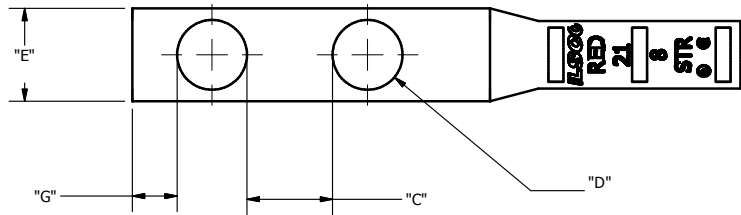
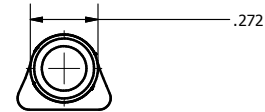
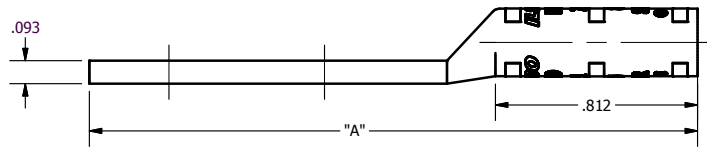


SCREW: NONE	MATERIAL: COPPER	REV: L			
CAT. NO.: SEE CHART	PLATING: EL-TIN	DRAWN BY:DW			SCALE: NTS
INFORMATION SHEET:FORM 157	MARKING: SEE BELOW	DATE:7/19/2007			SIZE: B
			DWG NO:	Y0103-D	
			SHEET:	1 OF 1	



DETAIL A
TOP & BOTTOM INK MARKING



CATALOG NUMBER	"A"	"C"	"D"	"E"	"G"	TANG MARKING
CLND-8-10-12	2.257	0.281	0.219	0.374	0.148	
CLND-8-10-58	2.257	0.406	0.219	0.374	0.148	ILSCO, C-8-10-58, 10 X 5/8, 8 STR, DIE 21, UL, CSA
CLND-8-10-1116	2.257	0.468	0.219	0.374	0.148	
CLND-8-10-34	2.444	0.531	0.219	0.374	0.148	ILSCO, C-8-10-34, 10 X 3/4, 8 STR, DIE 21, UL, CSA
CLND-8-10-1	2.694	0.781	0.219	0.374	0.148	
CLND-8-14-12	2.257	0.219	0.281	.491	0.180	
CLND-8-14-58	2.444	0.344	0.281	.491	0.180	ILSCO, C-8-14-58, 1/4 X 5/8, 8 STR, DIE 21, UL, CSA
CLND-8-14-34	2.444	0.469	0.281	.491	0.180	ILSCO, C-8-14-34, 1/4 X 3/4, 8 STR, DIE 21, UL, CSA
CLND-8-14-1	2.694	0.719	0.281	.491	0.180	ILSCO, CLND-8-14-1, 1/4 X 1, 8 STR, DIE 21, UL, CSA
CLND-8-516-58	2.444	0.282	0.343	.535	0.180	
CLND-8-516-34	2.694	0.407	0.343	.535	0.180	
CLND-8-516-78	2.694	0.532	0.343	.535	0.180	
CLND-8-516-1	2.944	0.657	0.343	.535	0.180	
CLND-8-516-134	3.507	1.407	0.343	.535	0.180	
CLND-8-38-34	2.694	0.344	0.406	.598	0.211	
CLND-8-38-78	2.944	0.469	0.406	.598	0.211	
CLND-8-38-1	2.944	0.594	0.406	.598	0.211	ILSCO, CLND-8-38-1, 3/8 X 1, DIE 21. 8 STR, UL, CSA
CLND-8-38-116	2.944	0.656	0.406	.598	0.211	
CLND-8-38-118	3.132	0.719	0.406	.598	0.211	
CLND-8-38-134	3.632	1.344	0.406	.598	0.211	
CLND-8-38-2	4.007	1.594	0.406	.598	0.211	
CLND-8-12-1	3.132	0.438	0.562	.755	0.265	
CLND-8-12-114	3.507	0.688	0.562	.755	0.265	
CLND-8-12-112	3.632	0.938	0.562	.755	0.265	
CLND-8-12-134	4.007	1.188	0.562	.755	0.265	ILSCO, CLND-8-12-134, 1/2 X 1 3/4, 8 STR, DIE 21, UL, CSA
CLND-8-12-178	4.007	1.313	0.562	.755	0.265	

THE INFORMATION CONTAINED WITHIN THIS DOCUMENT IS PROPRIETARY TO ILSICO AND MAY NOT BE DISCLOSED WITHOUT PRIOR WRITTEN CONSENT